

Structure



Pull out flap from back cover to see explanations of symbols



On request

## Pulse

### Full tiles shown

For full technical specifications see p234

Module = 457.2 x 457.2 mm

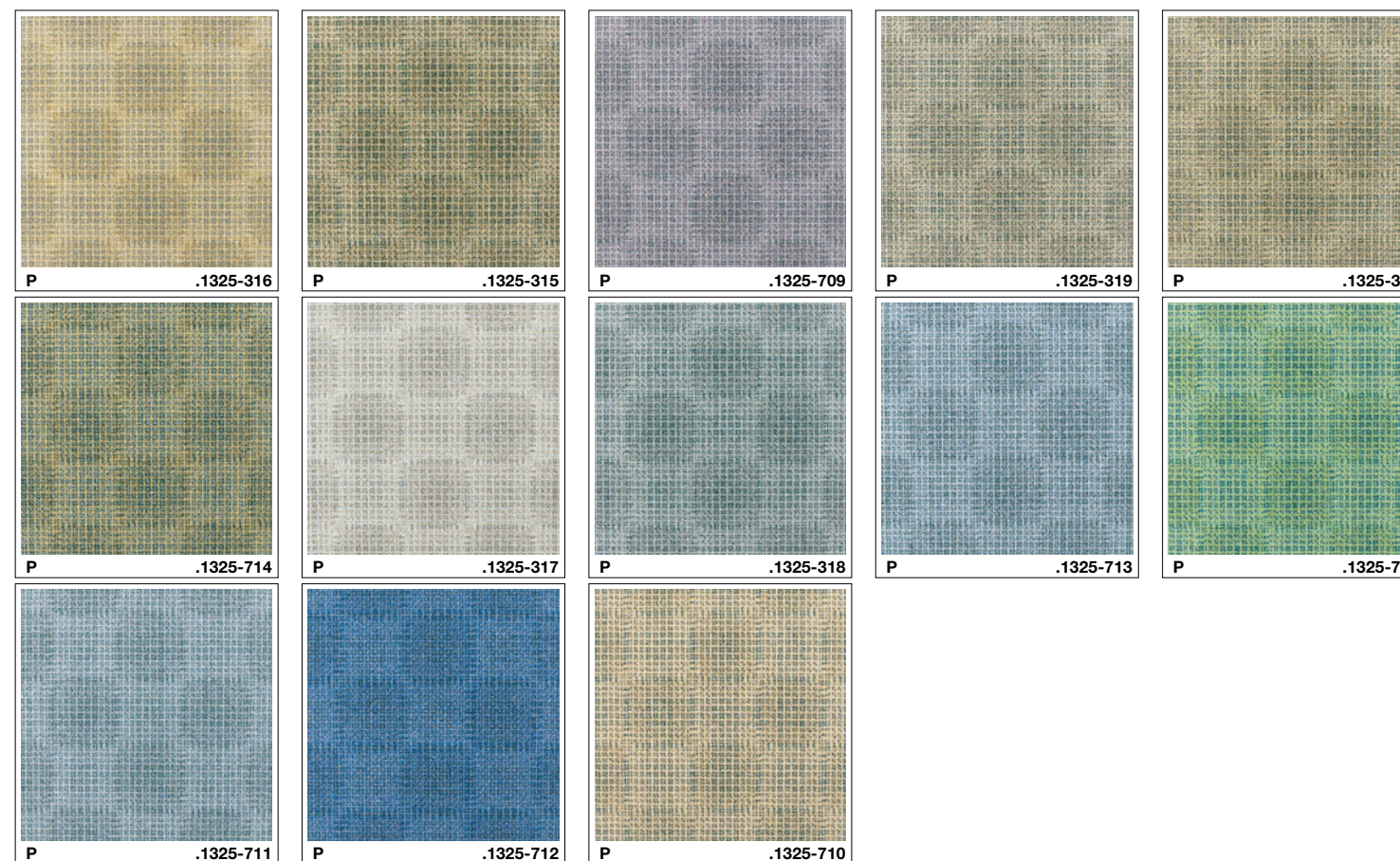
Yarn Weight = 560 g/m<sup>2</sup>

Pile Height = 3.3 mm

Tuft Density = 155,000 per m<sup>2</sup>

Total Thickness = 10.2 mm

Total Weight = 4000 g/m<sup>2</sup>







## Pulse

### Full tiles shown

For full technical specifications see p233

Module = 457.2 x 457.2 mm

Yarn Weight = 650 g/m<sup>2</sup>

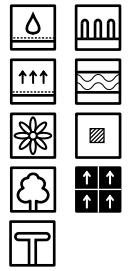
Pile Height = 3.6 mm

Tuft Density = 96,400 per m<sup>2</sup>

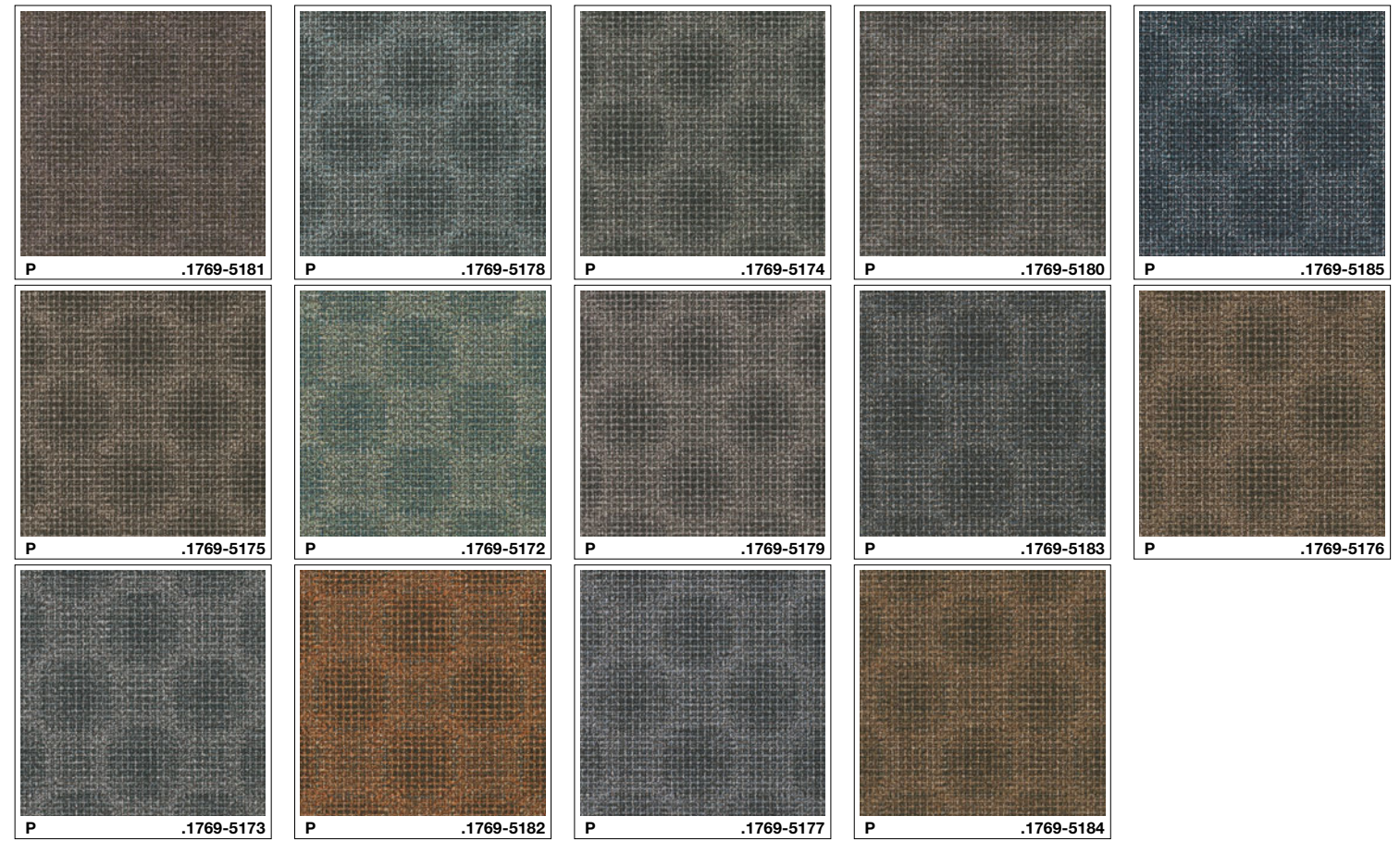
Total Thickness = 10.2 mm

Total Weight = 4000 g/m<sup>2</sup>

Pull out flap from back cover to see explanations of symbols



On request







# Mono

## Full tiles shown

For full technical specifications see p234

Module = 457.2 x 457.2 mm

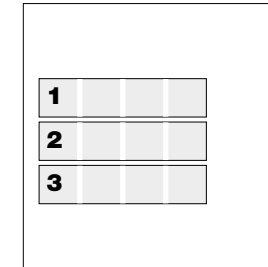
Yarn Weight = 560 g/m<sup>2</sup>

Pile Height = 3.3 mm

Tuft Density = 155,000 per m<sup>2</sup>

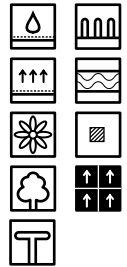
Total Thickness = 10.2 mm

Total Weight = 4000 g/m<sup>2</sup>

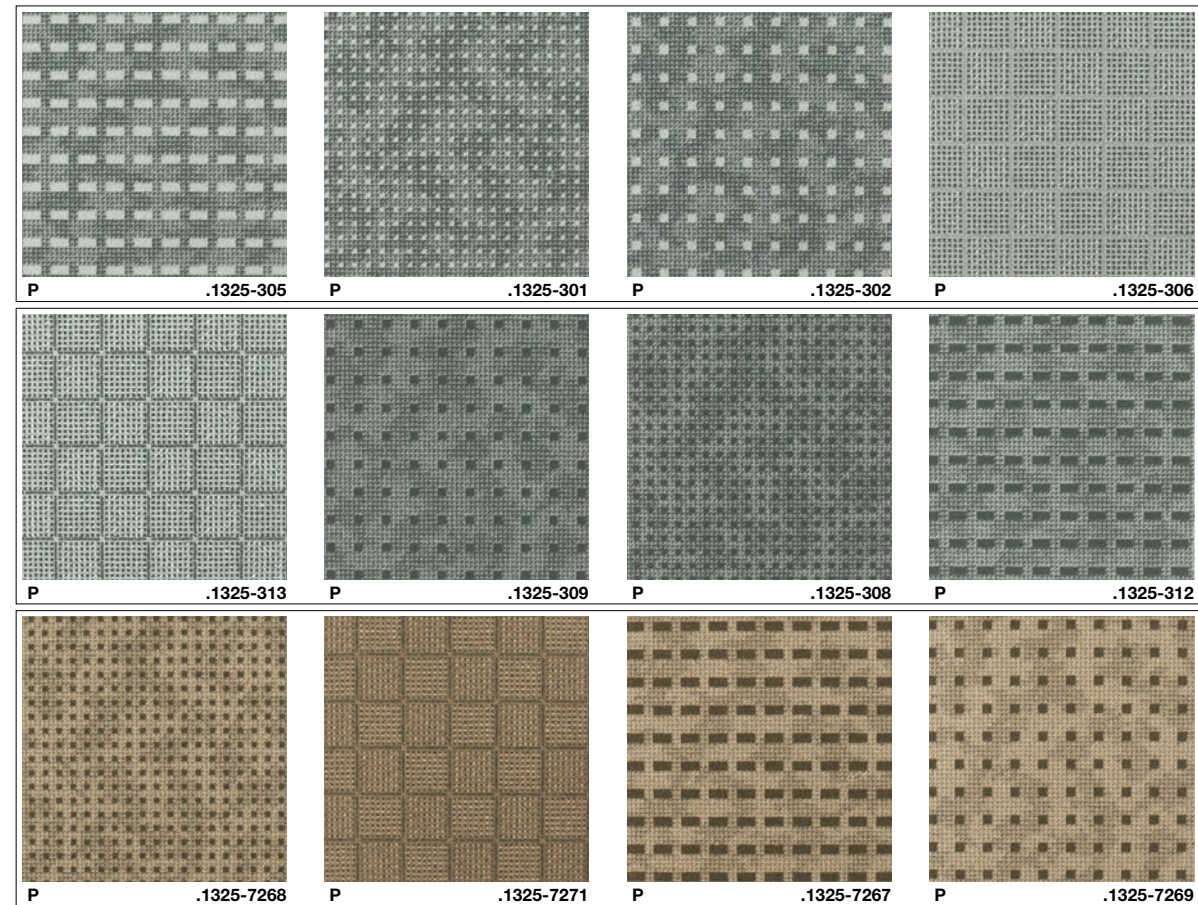


- Colours  
**1** Monolight  
**2** Monodark  
**3** Mononatural

Pull out flap from back cover to see explanations of symbols



On request







## Frame

### Full tiles shown

For full technical specifications see p234

Module = 457.2 x 457.2 mm

Yarn Weight = 560 g/m<sup>2</sup>

Pile Height = 3.3 mm

Tuft Density = 155,000 per m<sup>2</sup>

Total Thickness = 10.2 mm

Total Weight = 4000 g/m<sup>2</sup>

Pull out flap from back cover to see explanations of symbols



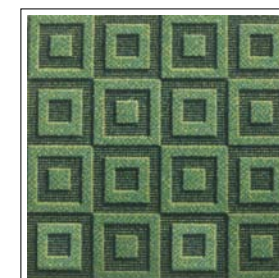
On request



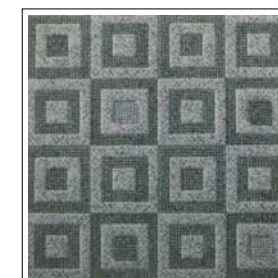
P.1325-7612



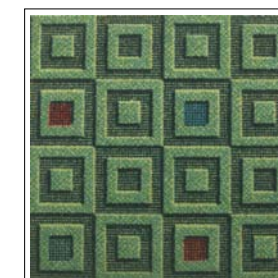
P.1325-5354



P.1325-5356



P.1325-5347



Frame Detail P.1325-5355



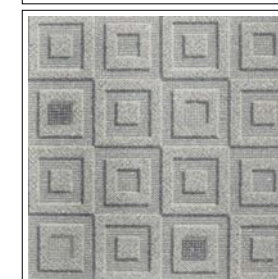
P.1325-5348



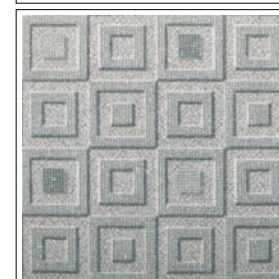
P.1325-5349



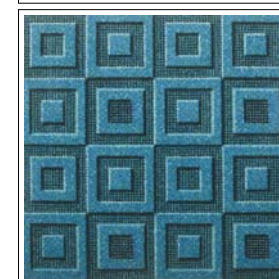
P.1325-5350



P.1325-5351



P.1325-5352



P.1325-5353

Milliken's unique Millitron® digital colour placement gives you the flexibility to customise your Frame design with accents of colour. This gives you the opportunity to enhance your space by customising the floor to tie in with a specific design scheme or corporate identity in a subtle yet flexible way.

Custom colour (roomset)

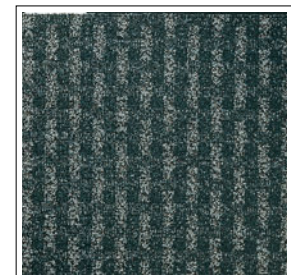




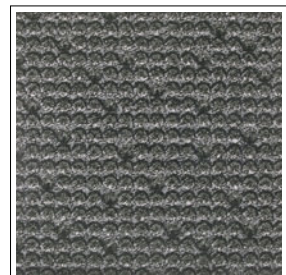
## Meshed Out

**Full tiles shown**  
For full technical specifications see p233

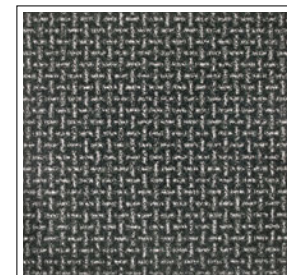
Module = 457.2 x 457.2 mm  
Yarn Weight = 650 g/m<sup>2</sup>  
Pile Height = 3.6 mm  
Tuft Density = 96,400 per m<sup>2</sup>  
Total Thickness = 10.2 mm  
Total Weight = 4000 g/m<sup>2</sup>



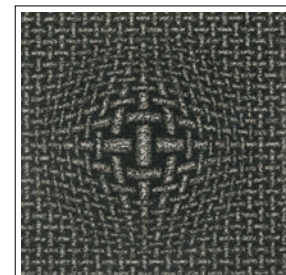
EDEN P .1769-530



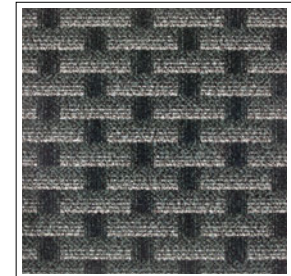
PUSH BUTTON P.1769-600



PLAIT P .1769-5345

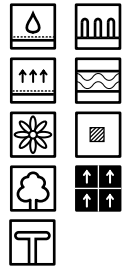


BUMP P .1769-5346



FENCE P .1769-5344

Pull out flap from back cover to see explanations of symbols



On request

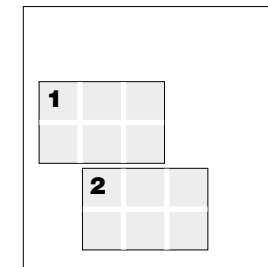




## Route One

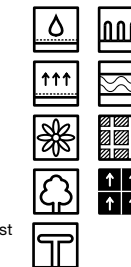
**Full tiles shown**  
For full technical specifications see p233

Module = 457.2 x 457.2 mm  
Yarn Weight = 650 g/m<sup>2</sup>  
Pile Height = 3.6 mm  
Tuft Density = 96,400 per m<sup>2</sup>  
Total Thickness = 10.2 mm  
Total Weight = 4000 g/m<sup>2</sup>

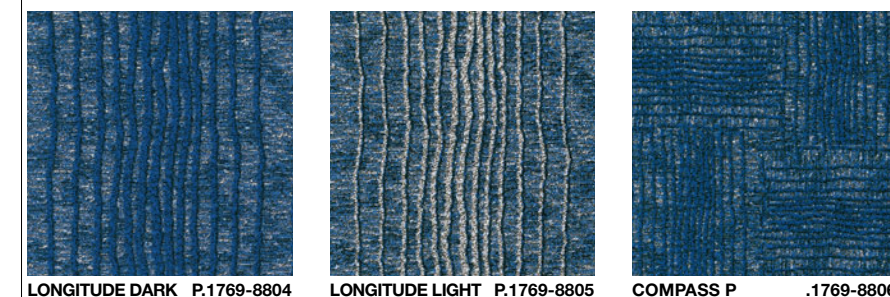
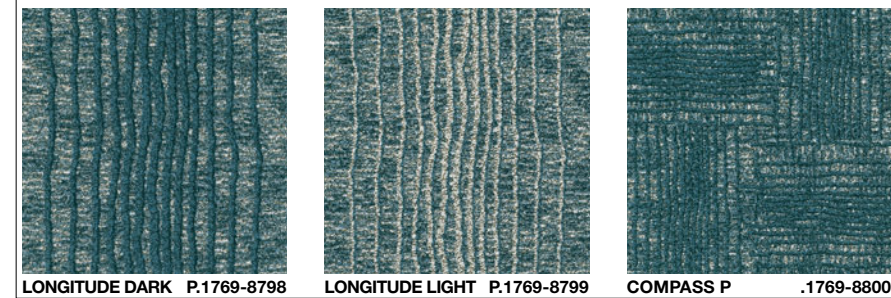
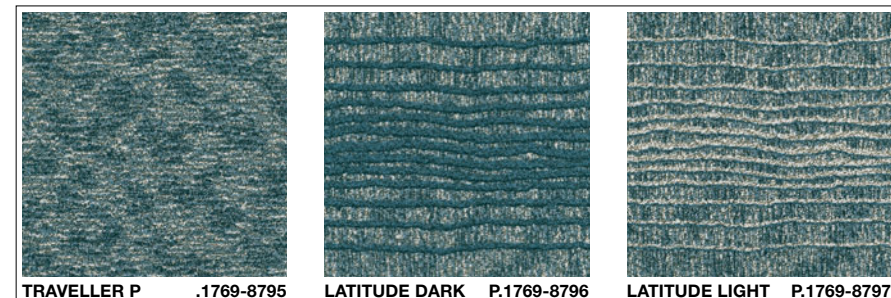


Colours  
**1** Tundra  
**2** Lagoon

Pull out flap from back cover to see explanations of symbols



On request



Route One's modular format and six co-ordinating design elements give you the flexibility to create a customised look that works with the specific requirements of your space.

Traveller, is a highly textural look that works as a background canvas. Longitude, Latitude and Compass, each of which are available in light and dark variations, provide co-ordinating elements that offer you the opportunity to play around with the floor and create a unique look to every space.

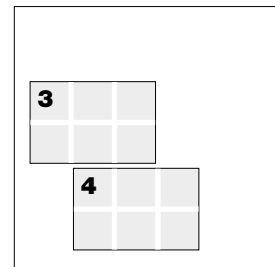


# Route One

## Full tiles shown

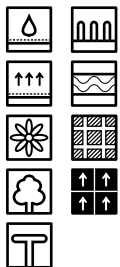
For full technical specifications see p233

Module = 457.2 x 457.2 mm  
 Yarn Weight = 650 g/m<sup>2</sup>  
 Pile Height = 3.6 mm  
 Tuft Density = 96,400 per m<sup>2</sup>  
 Total Thickness = 10.2 mm  
 Total Weight = 4000 g/m<sup>2</sup>

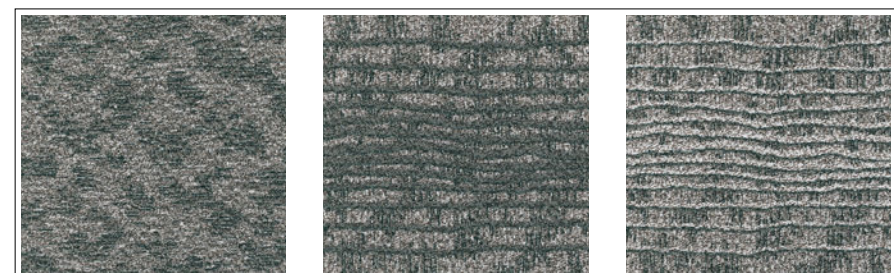


Colours  
**3** Heath  
**4** Lunar

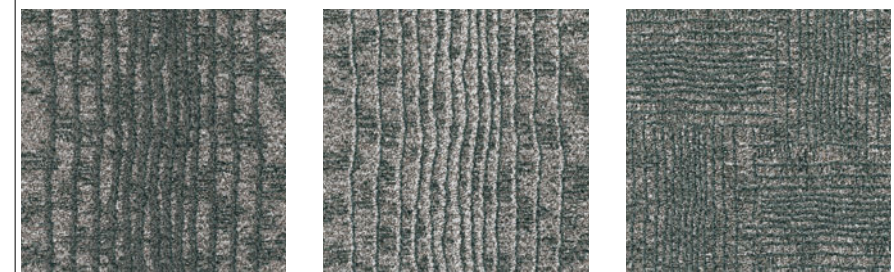
Pull out flap from back cover to see explanations of symbols



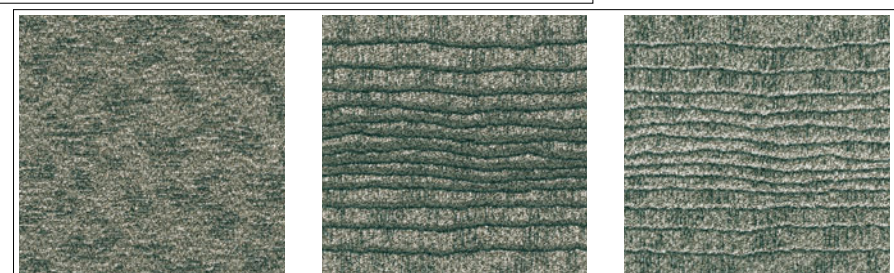
On request



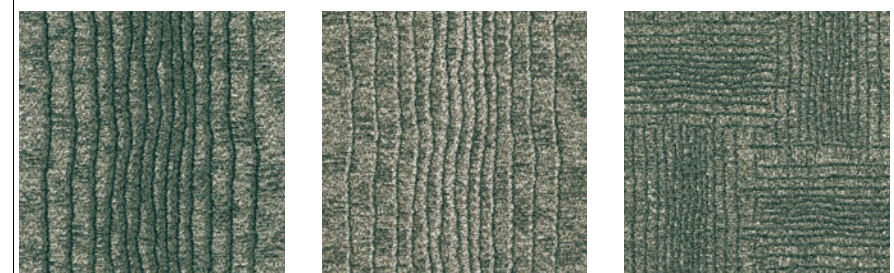
TRAVELLER P .1769-8807    LATITUDE DARK P.1769-8808    LATITUDE LIGHT P.1769-8809



LONGITUDE DARK P.1769-8810    LONGITUDE LIGHT P.1769-8811    COMPASS P .1769-8812



TRAVELLER P .1769-8813    LATITUDE DARK P.1769-8814    LATITUDE LIGHT P.1769-8815



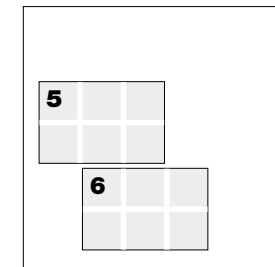
LONGITUDE DARK P.1769-8816    LONGITUDE LIGHT P.1769-8817    COMPASS P .1769-8818

# Route One

## Full tiles shown

For full technical specifications see p233

Module = 457.2 x 457.2 mm  
 Yarn Weight = 650 g/m<sup>2</sup>  
 Pile Height = 3.6 mm  
 Tuft Density = 96,400 per m<sup>2</sup>  
 Total Thickness = 10.2 mm  
 Total Weight = 4000 g/m<sup>2</sup>



Colours  
**5** Grove  
**6** Desert

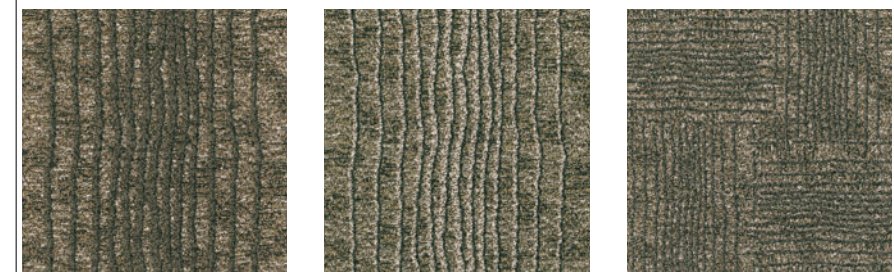
Pull out flap from back cover to see explanations of symbols



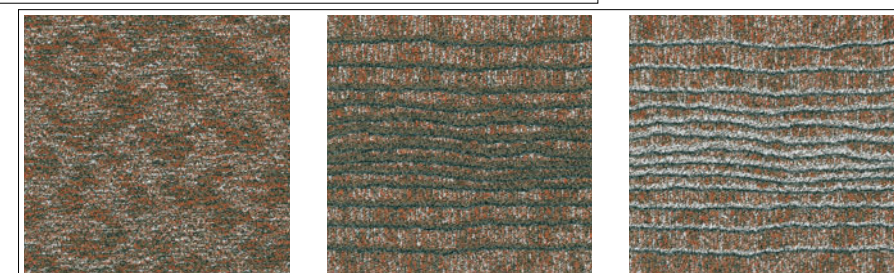
On request



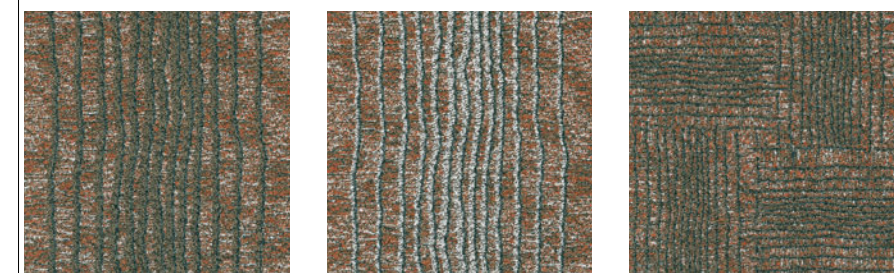
TRAVELLER P .1769-8819    LATITUDE DARK P.1769-8820    LATITUDE LIGHT P.1769-8821



LONGITUDE DARK P.1769-8822    LONGITUDE LIGHT P.1769-8823    COMPASS P .1769-8824



TRAVELLER P .1769-8825    LATITUDE DARK P.1769-8826    LATITUDE LIGHT P.1769-8827



LONGITUDE DARK P.1769-8828    LONGITUDE LIGHT P.1769-8829    COMPASS P .1769-8830



Pull out flap from back cover to see explanations of symbols



On request

## Filament

### Full tiles shown

For full technical specifications see p234

Module = 457.2 x 457.2 mm

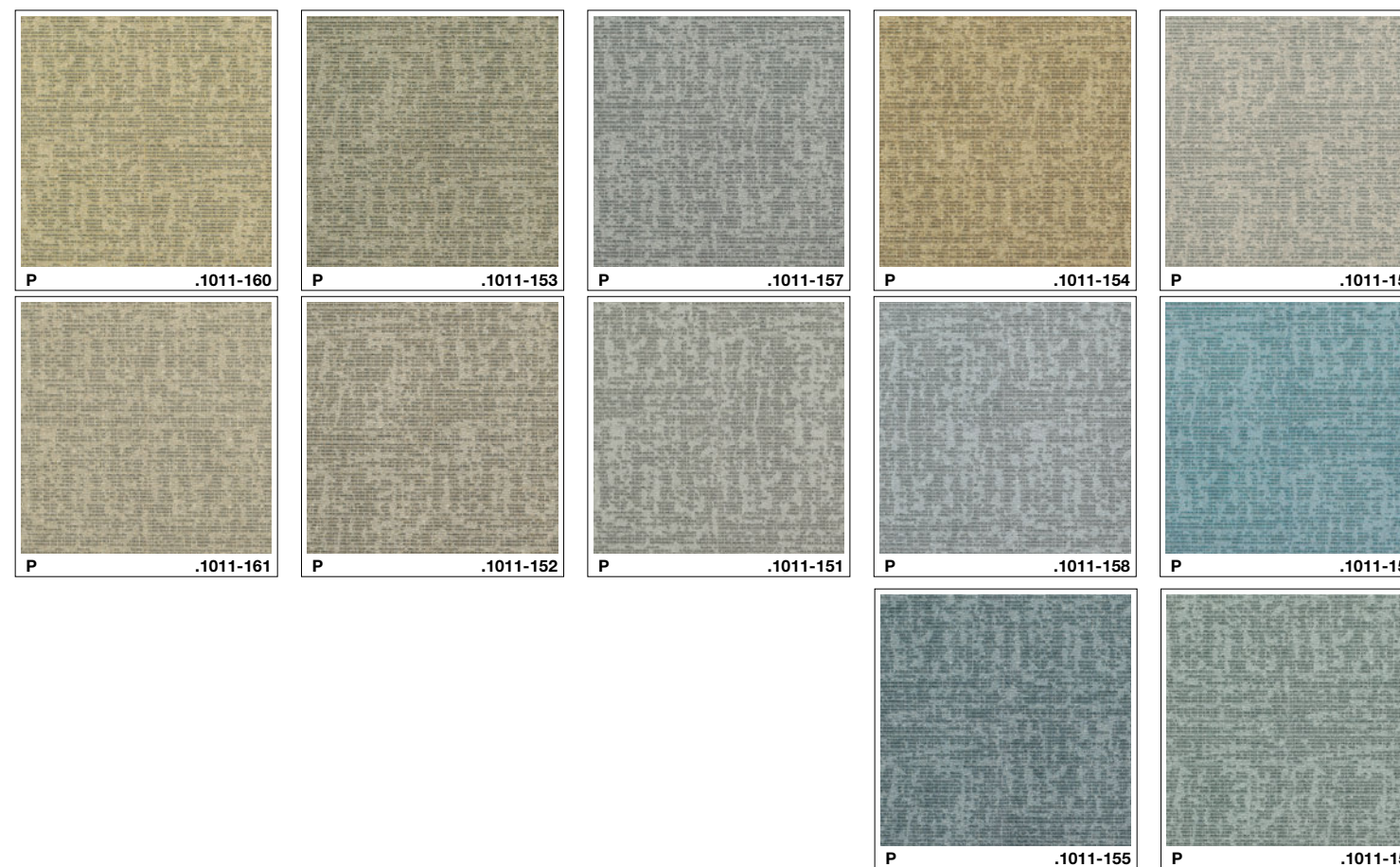
Yarn Weight = 560 g/m<sup>2</sup>

Pile Height = 3.3 mm

Tuft Density = 155,000 per m<sup>2</sup>

Total Thickness = 10.2 mm

Total Weight = 4000 g/m<sup>2</sup>







## Chicane

### Full tiles shown

For full technical specifications see p234

Module = 457.2 x 457.2 mm

Yarn Weight = 560 g/m<sup>2</sup>

Pile Height = 3.3 mm

Tuft Density = 155,000 per m<sup>2</sup>

Total Thickness = 10.2 mm

Total Weight = 4000 g/m<sup>2</sup>

Pull out flap from back cover to see explanations of symbols



On request

